



Active Digitally Steerable Column-Speaker

*Software Beam Positioning
Focussed on Audience*

PanBeam® PB216

Features:

- Integral Signal Processing and Digital Amplification
- Vertical coverage pattern adjustable to fit the Audience Area
- Internal Audio-DSP-Control for:
 - Control of Vertical Beam
 - opening angle
 - elevation angle
 - focus distance
 - 5 Band Parametric Equalizer
 - Volume Control
 - Delay up to 370 ms
- Build-in Electronic Driver Protection
- High Speech Intelligibility even in highly reverberant or noisy environments
- Slim Compact Design
- Lightweight: 27,5 kg
- Wide Horizontal Dispersion
- RS-485-Networking
- User-Friendly Windows-Software to control all Parameters
- Media-Bus-Control, Electronic Surveillance
- Wall-Mounting-Hardware included
- Mounting options for fixed Installation and portable Use
- Other Products available in the PanBeam-Family: PanBeam PB 08, PB16, PB16-C, PB 24, PB232
- Engineered and manufactured in Germany





Active Digitally Steerable Column-Speaker

*Software Beam Positioning
Focussed on Audience*

The **Pan-Beam®** offers an all-in-one self-powered DSP-controlled solution in nearly every architecturally demanding sound-installation.

The important benefit of PanBeam is the possibility to focus the audio-output to where it should go: TO THE AUDIENCE!

The **PanBeam® PB 216** is ideally suited for smaller environments with unfavourable acoustical circumstance, where improved speech intelligibility is required.

A single **PanBeam® PB 216** is capable of covering an audience-area of up to 50 m, giving a constant sound pressure and clarity over the complete distance. The PanBeam PB 216 is equipped with six custom-made 6,5"-woofers, ten by DNH custom-made 1"-drivers, full digitally processor-boards and sixteen digital power-amps to achieve an optimized result in sound and directivity.

The included DSP-System offers a wealth of useful audio processing features including: volume control, parametric EQ and delay.

As a special feature the vertical coverage can be focused in opening angle, elevation angle and focus distance. Using the feature of the dual-lobe-technology it is possible to build up two audience-areas covered by two different beams.

The **PanBeam® PB216** can be controlled by a special user-friendly Windows Control software for set up the beam steering parameters, audio processing and surveillance features. Also the implementation of existing media-control-systems is possible.

The **PanBeam® PB 216** gives the ideal solution for easy and unobtrusive implementation in even the most architecturally sensitive environment.

PanBeam® PB 216 can be cascaded up to **PanBeam® PB 232** to increase frequency-range, beamwidth and steerability. The effort will be a more shortened throw down to lower frequencies combined with a higher sound pressure level.

Wall mounting hardware included.

Typical applications:

- Churches, Museums
- Railway-Stations
- Conference Facilities
- Lecture Halls
- Shopping Malls
- A/V Presentation Rooms
- Fill or Delay System in larger installations

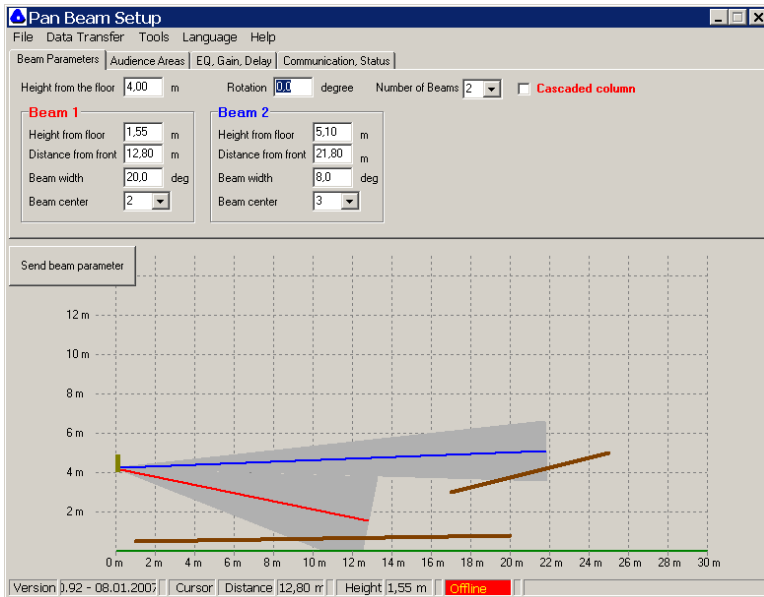
Available Options:

- Extended Delay
- Dual Line Level Audio Inputs with Priority
- Automatic Ambient Noise Levelling
- Full range of mounting Accessories
- Colour matching service



Active Digitally Steerable Column-Speaker

*Software Beam Positioning
Focussed on Audience*



User-friendly PC-Software **PanBeam-Setup** to control all parameters of **PanBeam®**: The beam parameters, the EQ, gain, delay, to set up a network, build up audience areas and check the status of each electronic device.



PanBeam® is a family of several intelligent models: PB08 with eight channels, PB16 and PB16-C with 16 channels, PB 24 with 24 channels, PB32-C and the big PB232 with 32 channels, every type included amplifiers and maximum DSP-power.

More **PanBeam**-Products will be released in the near future.



Active Digitally Steerable Column-Speaker

*Software Beam Positioning
Focussed on Audience*

PanBeam® PB 216 Specifications

Configuration:

2-Way-System, 6 x 6,5" cone, 10 x 1" HF-Neodymdriver

Operating Mode:

Self-powered, 16 x digitally amplifier

Acoustical Performance:

Operating Range: 85Hz - 20 kHz (+3/-10dB)

Nominal Beamwidth: Horz: 150°
Vert. 5°-40° digitally variable

Aiming angle: -45° - +45°, digitally variable
Focus Distance: 5 m to 75 m
Typical throw: 35 m

SPL-Limit (avg): 101 dB A-weighted w pink noise at 25 m
SPL-limit (peak): 104 dB SPL at 25 m
Dynamic range: >92 dB

Electronic Performance:

Amplifier output: 10 x 40 Watt max (4 Ohm) HighFrequency
6 x 100 Watt max (4 Ohm) Low-Mid
Amplifier type: Digital PWM
Input: Transformer-balanced
Line-Level +4dBu

AC Mains: 230 or 110 Volt (+5/-10%)
Power consumption: 30 VA (idle), 700 VA (max)
Temperature range: -10° - +50° C ambient

Mechanical Performance:

Enclosure: Rear extruded Aluminium
Grill: Powder-coated perforated steel
Colour: Aluminium RAL 9006
Dimensions: 244mm x 210mm x 1100 mm
Weight: 27,5 kg

Specifications subject to change without

Pan Acoustics reserves the right to make changes without prior notification.

Pan Acoustics GmbH – Rebenring 33 – D-38106 Braunschweig – Germany
Phone: +49(0)531 3804 490 Fax: +49(0)531 3804 349

www.pan-beam.de kontakt@pan-beam.de